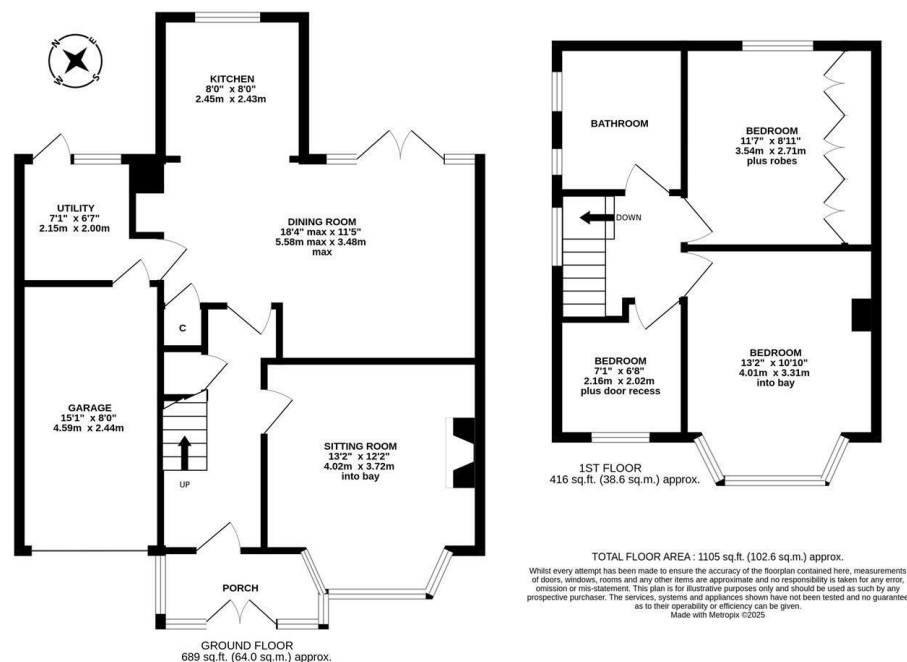




This well presented 1930's semi-detached family home is ideally located on Hunters Road, South Gosforth. Hunters Road, close to outstanding local schools, is conveniently situated close to South Gosforth Metro Station and the local shops and amenities of Station Road.

The property boasts over 1,100 Sq ft and the accommodation briefly comprises: Porch leading to entrance hall with stairs to first floor and under stairs cupboard; sitting room with walk-in bay and gas fire place; 18ft dining room open to kitchen and with doors leading to the rear garden and access to utility room; utility room with doors to rear garden and to integral garage. The first floor landing gives access to three bedrooms and a family bathroom with three piece suite. Bedroom One and Two both comfortable doubles, Bedroom one with walk-in bay. Externally; a driveway providing off street parking to the front, an enclosed lawned garden to the rear with fenced boundaries. Early viewings are advised to avoid disappointment!.

1930's Semi-Detached Family Home | 1,105 Sq ft (102.6 m²) | Three Bedrooms | Open Plan Kitchen/Diner | Family Bathroom | Utility Room | Driveway & Garage | Delightful Rear Gardens | Great Location | Garage | Freehold | Council Tax Band C | EPC Rating: D



Offers Over £295,000

IMPORTANT NOTE: These particulars and the descriptions and measurements herein do not constitute representation and whilst every effort has been made to ensure accuracy, this cannot be guaranteed.

